

## PMF Sampling

### The Public Library of Cincinnati and Hamilton County (PLCH) & University of Cincinnati Libraries (UC)

Ashleigh Schieszer, Library and Archives Conservator

10/29/2015

#### Summary:

**9 total samples** were removed from **two bindings** that contain Phillis Wheatley's Poems on various subjects, religious and moral, imprints from 1773:

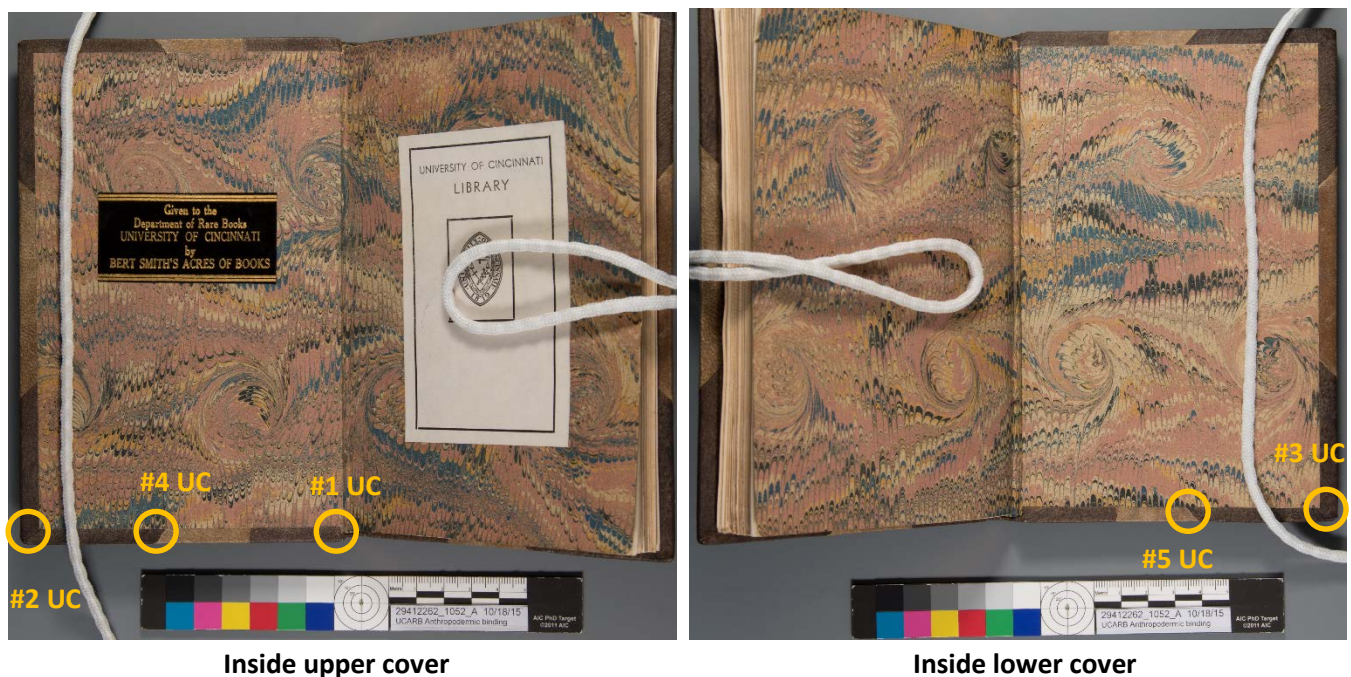
5 samples from the University of Cincinnati Libraries half leather binding with parchment (samples # 1-5)

4 samples from the Public Library of Cincinnati's full leather binding with leather patches (samples # 6-9)

Also included is the photographic documentation of the two bindings, as well as the library catalog record information.

**Description of Samples:** Samples are contained in V-vials labeled #1-9 in black Sharpie and are stored together in a small plastic bag. Sizes of samples range from a few fibers to a "large chunk" of parchment 0.5 x 3 mm in size.

#### Overview of the University of Cincinnati Libraries half leather binding sample locations # 1-5:

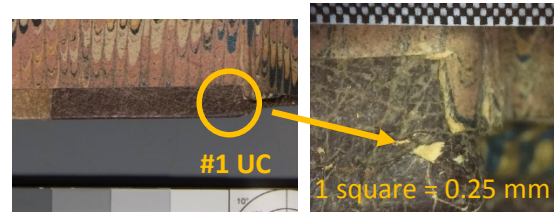


#### **Sample # 1 (UC, Item Record # i21768183):**

**Description:** Dark brown leather

**Sample location:** Spine, lower turn-in, inner cover hinge

**Size of sample:** 3 small chunks of dark brown epidermis and a few tufts of fibers from light-brown dermis



**PMF Sampling**

**The Public Library of Cincinnati and Hamilton County (PLCH) & University of Cincinnati Libraries (UC)**

Ashleigh Schieszer, Library and Archives Conservator

10/29/2015

**Sample # 2 (UC, Item Record # i21768183):**

**Description:** Dark brown leather

**Sample location:** Upper cover, bottom corner, inside turn-in

**Size of sample:** 2 small chunks of epidermis and small fibers of dermis

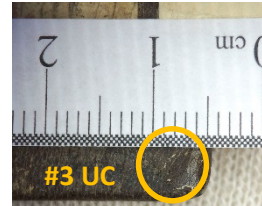


**Sample # 3 (UC, Item Record # i21768183):**

**Description:** Dark brown leather

**Sample location:** Lower cover, bottom corner, inside turn-in

**Size of sample:** 1 large chunk of epidermis removed with tweezers



**Sample # 4 (UC, Item Record # i21768183):**

**Description:** Parchment (sheep skin?)

**Sample location:** Upper cover, bottom edge turn-in, left edge

**Size of sample:** 1 large skinny and long chunk cut with scalpel



**Sample # 5 (UC, Item Record # i21768183):**

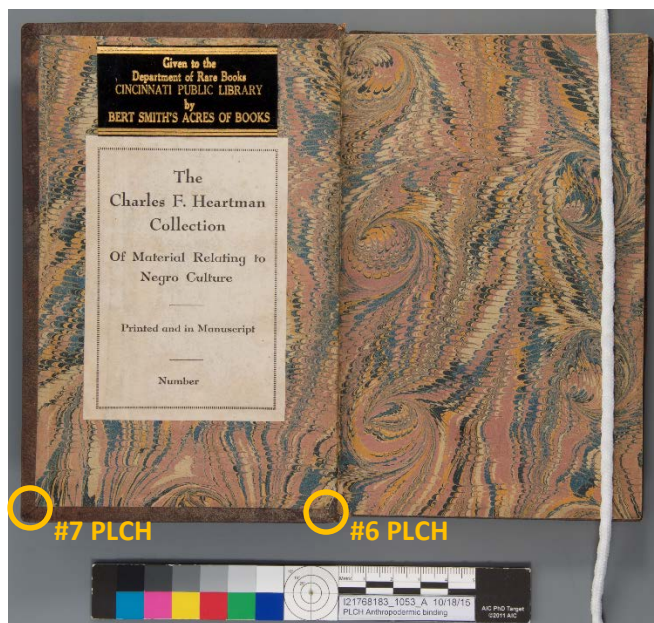
**Description:** Parchment (sheep skin?)

**Sample location:** Lower cover, bottom edge turn-in, right edge of parchment

**Size of sample:** 1 large skinny and long chunk cut with scalpel



**Overview of the Public Library of Cincinnati's full leather binding sample locations # 6-9:**



**Inside upper cover**



**Inside lower cover**



**PMF Sampling**

**The Public Library of Cincinnati and Hamilton County (PLCH) & University of Cincinnati Libraries (UC)**

Ashleigh Schieszer, Library and Archives Conservator

10/29/2015

**Sample # 6 (PLCH, Item record # i29412262):**

**Description:** Dark brown leather

**Sample location:** Spine, lower turn-in, inner cover hinge

**Size of sample:** 1 large chunk



---

**Sample # 7 (PLCH, Item record # i29412262):**

**Description:** Dark brown leather

**Sample location:** Upper cover, bottom corner, inside turn-in

**Size of sample:** 1 medium chunk and 3 small chunks and a few fibers



---

**Sample # 8 (PLCH, Item record # i29412262):**

**Description:** Dark brown leather

**Sample location:** Lower cover, bottom corner, inside turn-in

**Size of sample:** 1 large chunk and 1 small chunk



---

**Sample # 9 (PLCH, Item record # i29412262):**

**Description:** Light brown leather that appears to be a patch

**Sample location:** Lower board

**Size of sample:** 1 large chunk, 3 small chunks and a tuft of fiber

